

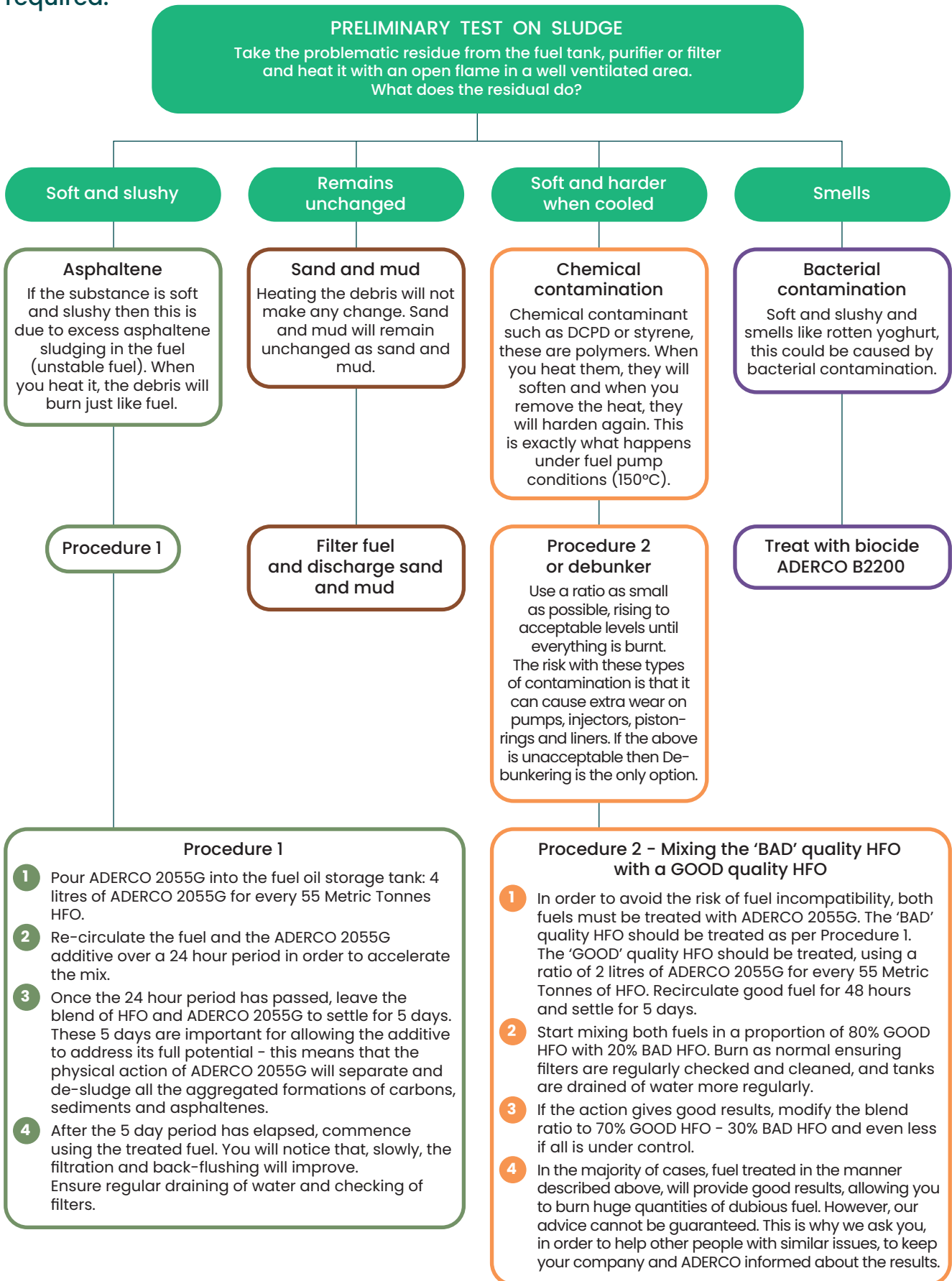


Bad Fuel Shock Treatment

ADERCO 2055G
Procedure Guide

BAD FUEL PROCEDURE

Follow the flow chart below to diagnose the problem and determine treatment required.





www.aderco.com

Aderco Marine SRL
Drève Richelle 167,
B-1410 Waterloo – Belgium
T. +32 2 354 46 72
Technical dept : +32 2 354 54 10
info@aderco.com
technical@aderco.com

Download the Aderco app :

